

DAVIS ISLAND OYSTER CASTLE PROJECT 2012

In partnership with the City of Virginia Beach, Lynnhaven River NOW constructed the first Oyster Castle reef in the Lynnhaven. On June 4th, we completed construction of 21 oyster castle structures on 244 feet of shoreline on Long Creek. We moved 6 tons of blocks by hand, thanks to some very strong volunteers, and by boat, thanks to a few generous oyster growers who helped with transportation. Another section will be constructed next year. As shown in the latest photos here, we have documented very good oyster settlement and growth after 4 months.



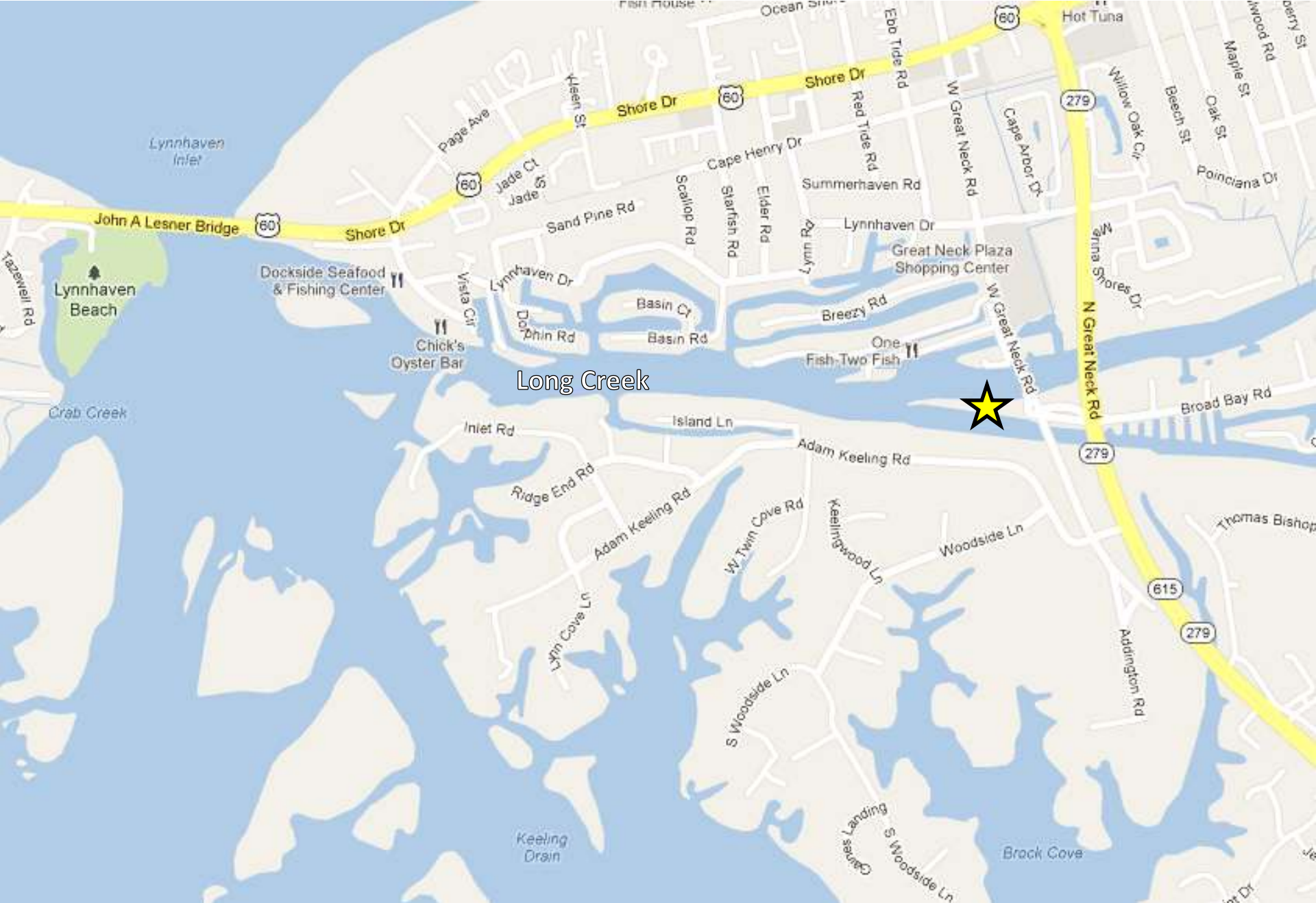
DAVIS ISLAND OYSTER CASTLE PROJECT 2012

Many thanks to the partners, supporters and volunteers who helped make this project possible, including but not limited to:

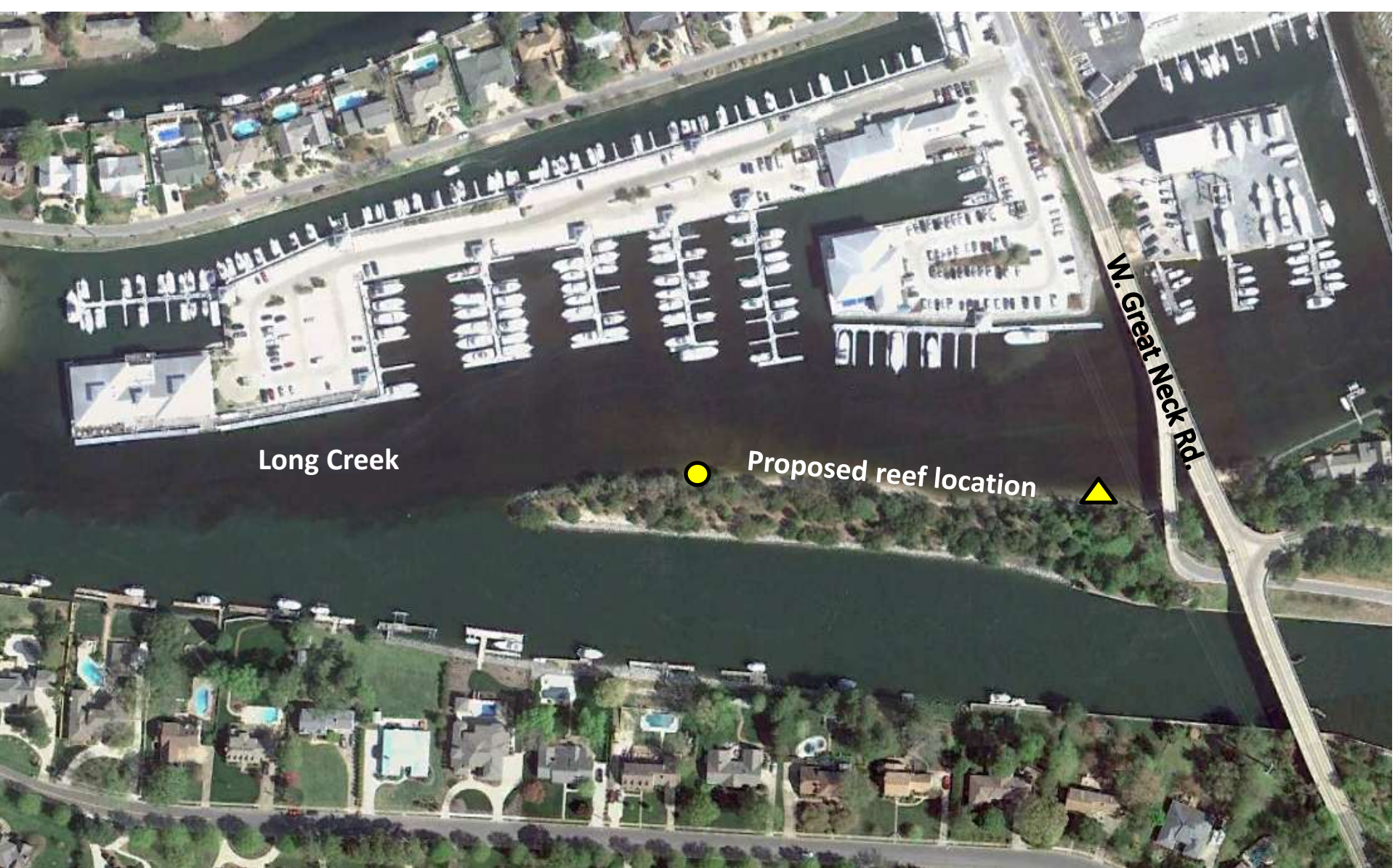
- City of Virginia Beach Planning, Public Works
- LRNow Oyster Committee
- Allied Concrete, Gus Lorber
- Barry Truitt and Bo Lusk of The Nature Conservancy
- Cape Henry students Steve Sims, Allison Riccio and Nick Anderson
- Cameron Chalmers, Chris Pace, Dirk Sanford,
- Nelva Capps, Scott Hotchkiss
- Virtexco







★ Proposed oyster reef



Long Creek

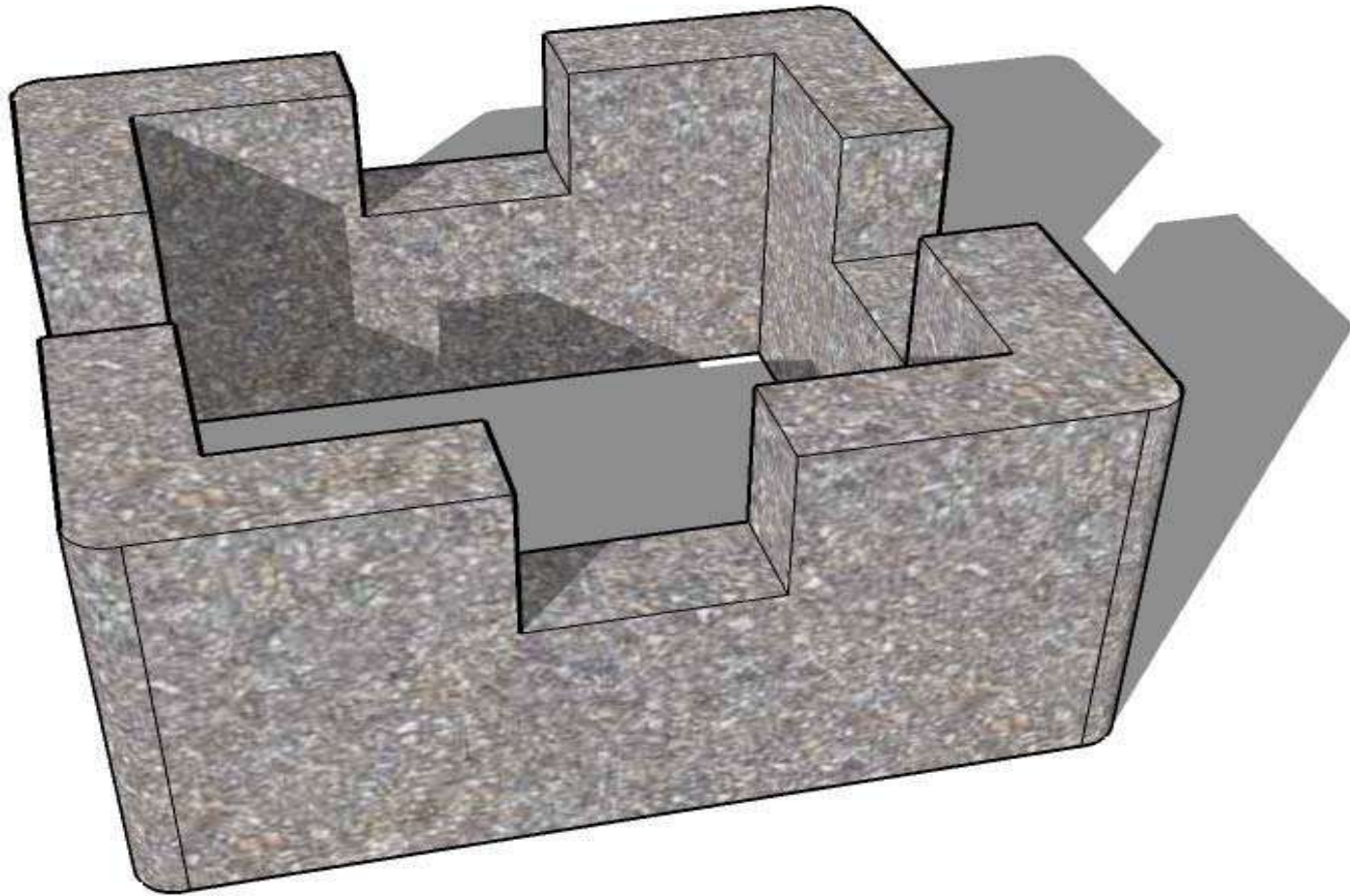
Proposed reef location

W. Great Neck Rd.

- Western endpoint 36 deg 54' 13.32" N, 76 deg 4' 16.47" W
- ▲ Eastern endpoint 36 deg 54' 13.04" N, 76 deg 4' 9.60" W

An “Oyster Castle”

Designed and Produced by Allied Concrete



Material Certification for Oyster Castles®

- “Oyster Castles® are manufactured, using 100% renewable energy, from raw materials that are not problematic, as evaluated by MBDC’s stringent standards for Gold Level Certification. Oyster Castle® blocks are made of minerals from the earth's crust (including natural oyster shells) and designed to be returned to the earth as part of the natural habitat. They are intended to replace natural oyster reefs that have been previously depleted by human activities. They do not contain any problematic materials”. (Bonnie Eveleth, MBDC)



A Typical Castle Stacking Arrangement

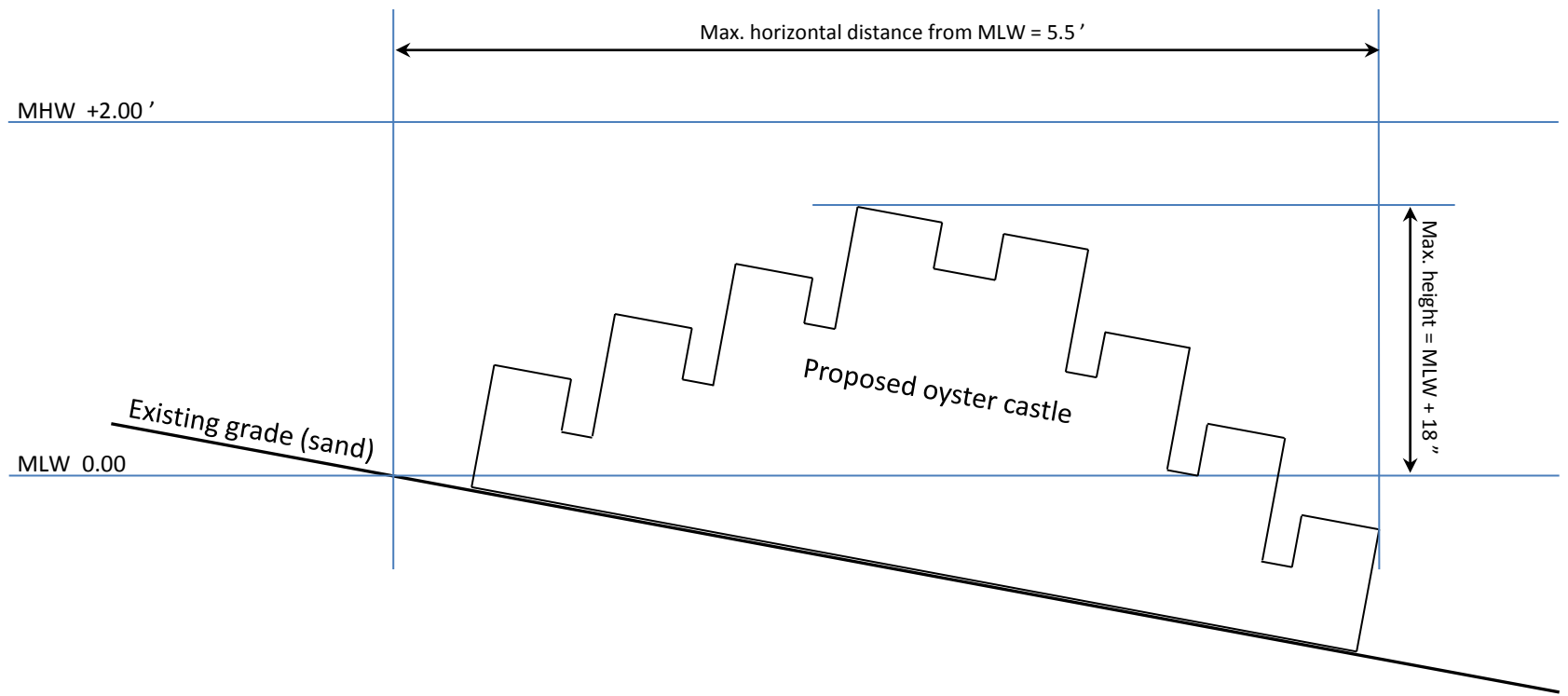


A Castle arrangement covered with oysters (from S. Carolina)





LRNow Oyster Restoration Committee – using Legos to discover new ways to build with castle blocks



SCALE = 10 inches

SLOPE = 5.75 : 1

Davis Island Oyster Reef Restoration (Cross-section View, typical)

March 27, 2012



ALLIED CONCRETE
Charlotte, NC, VA

DOT 611711

5

KENWORTH

The "Argyle" Oyster Castle design in Legos



The "Argyle" Oyster Castle design



The "Argyle" Oyster Castle design





PENSKE

Truck Rental

GoPenske.com
1-800-GO-PENSKE

OYS'ER CASTLES
ALLER
OYS'ER
CASTLES



PENSKE

Truck Rental

GoPenske.com
1-800-GO-PENSKE

ALUB
OYSTER SHELLS

ALUB
OYSTER SHELLS

LITTLE B































Davis Island oyster castle – 4 months after installation (Sept 27, 2012)



Davis Island oyster castle – 4 months after installation (Sept 27, 2012)



Davis Island oyster castle – 4 months after installation (Sept 27, 2012)





River Restoration Project

Helping clean
the Lynnhaven River
and provide healthy habitat.



LYNNHAVEN River NOW
Restoring a legend.